



MPP36 ElectroCraft MobilePower™

MobilePower™ Series

Low Voltage - High Torque

ElectroCraft's MPP36 MobilePower™ integrates a 4-pole PMDC brush motor with a very robust 2-stage right-angle worm gearbox, designed for bariatric medical mobility applications.

ElectroCraft MobilePower™ gearmotors feature an integrated design that provides increased performance and reliability at an affordable price compared to traditional motor/gearbox combinations. As with all ElectroCraft products, MobilePower™ gearmotors are customizable to meet specific application requirements.

Features:

- Smooth, efficient motion
- Durable and highly reliable integrated worm-gear design
 - Suitable for uneven terrain and curb-climbing
- High starting torque:
 - Peak starting torque up to 144.89Nm
 - 15-minute continuous torque up to 39.2Nm
- Configurable or completely customizable designs
 - Motor, gearbox, brake, encoder, cabling

Typical applications:

- Medical Mobility Chairs
- Stair Lifts

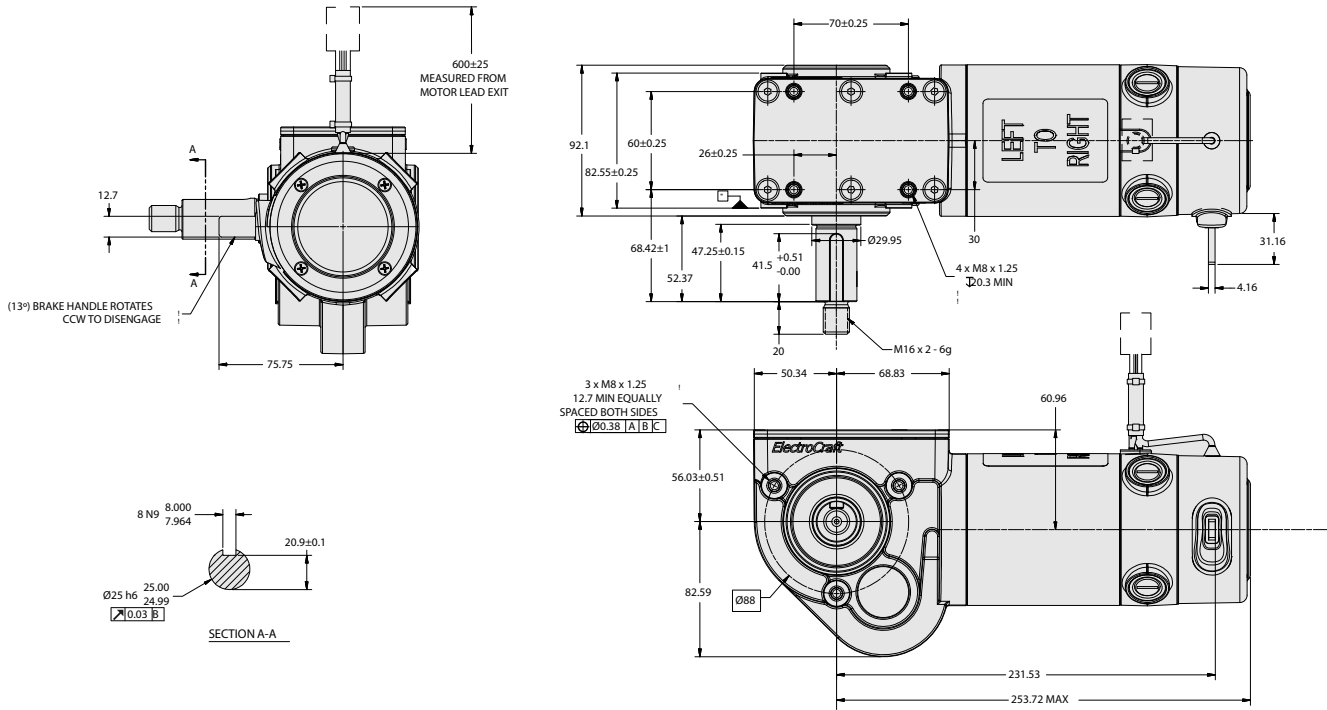


M P P 3 6	- W R	0 3 3	V 2 4	- 2 0 0	- X
MTR-GRB Model		Gear Ratio	Rated Voltage		Encoder Option
Heavy Duty Gearbox With PMDC 4-Pole = MPP36		017 = 16.97:1 018 = 18.35:1 020 = 19.91:1 022 = 21.67:1 024 = 23.68:1 025 = 25.41:1 028 = 27.56:1 030 = 30.00:1 033 = 32.79:1	24 = 24 VDC		X = None
Gearbox Option					Connector Option
WR = Right Angle Worm & Spur W/ Right Hand Output Shaft WL = Right Angle Worm & Spur W/ Left Hand Output Shaft					0 = None 5 = Dynamic Controls Shark 6 = PG R-net Drive 7 = Anderson Powerpole 8 = PG VR2 Drive 9 = Curtis enAble Drive
		Disengage Option			Lead Option
		2 = No Gear Release, Manual Release Brake			0 = Unshielded Leads Covered with Braided Sleeving

MPP36 ElectroCraft MobilePower™

MobilePower™ Series

Low Voltage - High Torque



MPP36 Mechanical / Winding Data

Gear Ratio	32.79:1	30.00:1	27.56:1	25.41:1	23.68:1	21.67:1	19.91:1	18.35:1	16.97:1
Operating Voltage (VDC)	24								
No Load Speed (RPM)	122	133	145	157	169	185	201	218	236
Peak Torque (Nm)	144.89	132.56	121.78	112.28	104.63	95.75	87.97	81.08	74.98
Peak Current (Amps)	100								
Peak Power (Watts)	1214								
S2 Torque (15 min) (Nm)	39.20	35.87	32.95	30.38	28.31	25.91	23.80	21.94	20.29
S2 Current (15 min) (Amps)	30.0								
S2 Power (15 min) (Watts)	445								
S1 Torque (Continuous) (Nm)	12.03	11.00	10.11	9.32	8.69	7.95	7.30	6.73	6.22
S1 Current (Continuous) (Amps)	12.0								
S1 Power (Continuous) (Watts)	148								
Torque Constant (Nm/A)	0.0568								
Voltage Constant (V/KRPM)	5.95								
Motor Inertia (Armature) (kg.mm ²)	1129.23								
Motor Winding Resistance (Ohms)	0.3								
Motor Winding Inductance (µH)	73								
Motor Max Winding Temp (°C)	155								
Motor Poles	4								
Motor Mass (kg)	7.48 (MPP26), 7.17 (MPP36)								

Notes:

Gear Motor specifications (torque, current, power) are reference values based on 25°C operating temperature.
Do not apply maximum current for more than 5 seconds or more than twice without 10 minutes between cycles



Your Genius. Our Drive.

ElectroCraft, Inc.
2 Marin Way, Suite 3
Stratham, NH 03885-2578 USA

Tel: (844) 565-6144

Email: sales@electrocraft.com
www.electrocraft.com

MPP36 ElectroCraft MobilePower™

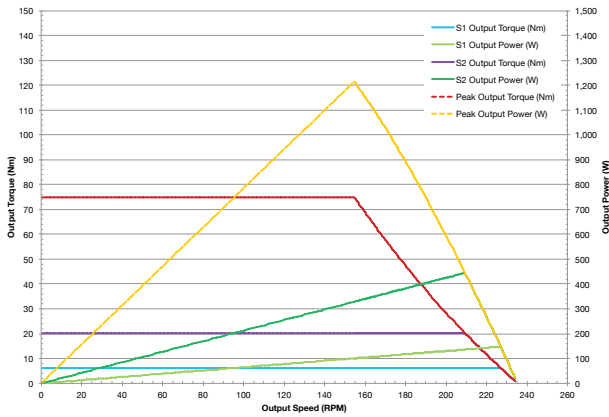
Geared Mobility Motor

Low Voltage - High Torque

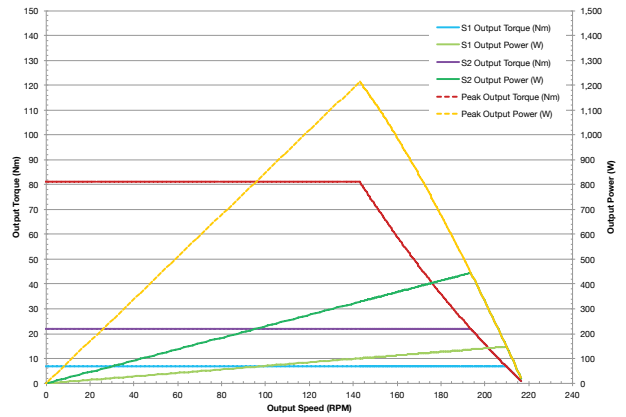


MPP36 Motor Performance

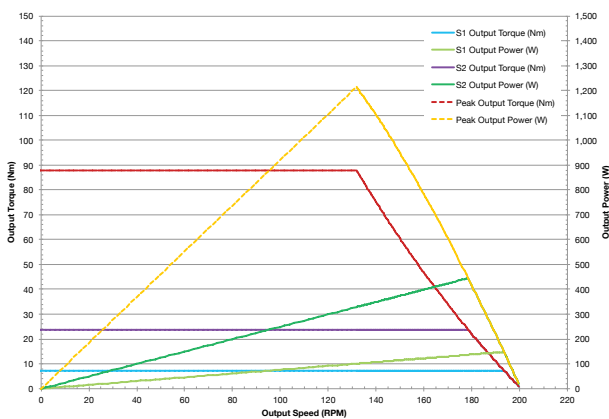
16.97:1 Ratio



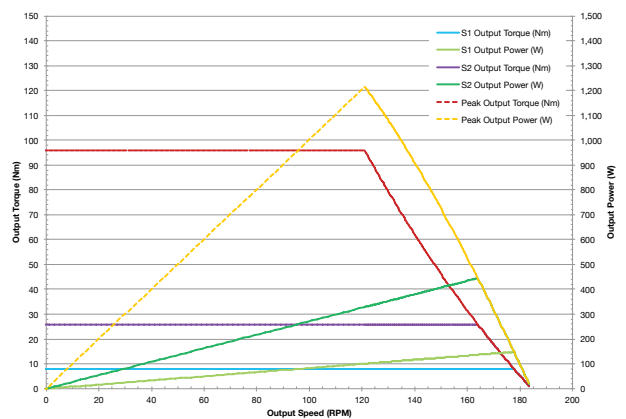
18.35:1 Ratio



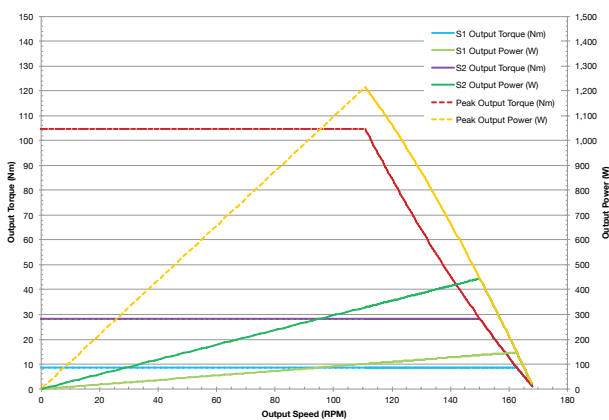
19.91:1 Ratio



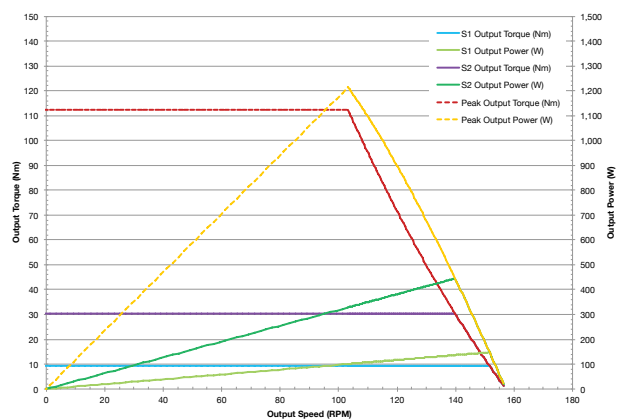
21.67:1 Ratio



23.68:1 Ratio



25.41:1 Ratio



Your Genius. Our Drive.

ElectroCraft, Inc.
2 Marin Way, Suite 3
Stratham, NH 03885-2578 USA

Tel: (844) 565-6144

Email: sales@electrocraft.com
www.electrocraft.com

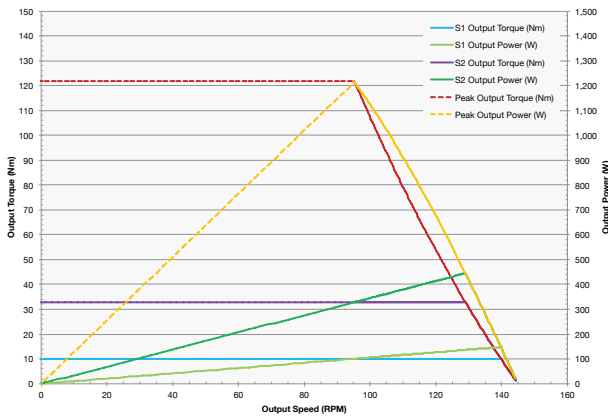
MPP36 ElectroCraft MobilePower™

Geared Mobility Motor

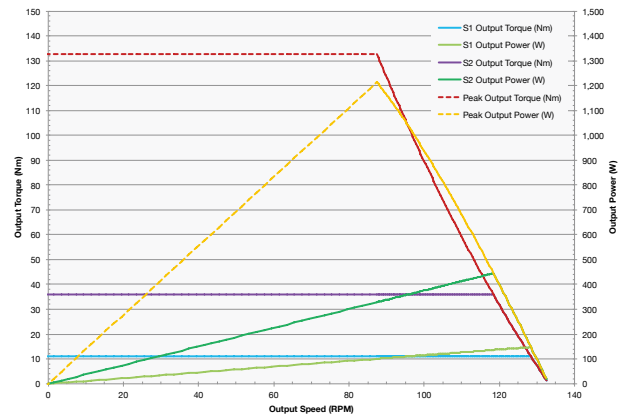
Low Voltage - High Torque



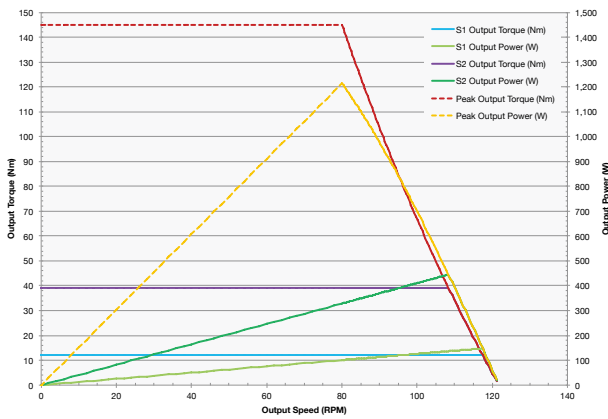
27.56:1 Ratio



30.00:1 Ratio



32.79:1 Ratio



Your Genius. Our Drive.

ElectroCraft, Inc.
2 Marin Way, Suite 3
Stratham, NH 03885-2578 USA

Tel: (844) 565-6144

Email: sales@electrocrafter.com
www.electrocrafter.com